

# Spring Catalog



AMERICAN  
MONOGRAM



908 Vista Ave.  
Lewiston, ID 83501  
(208) 746-9989

[ron@americanmonogram.com](mailto:ron@americanmonogram.com)  
[www.americanmonogram.com](http://www.americanmonogram.com)

### **Do you want to make your jacket or shirt unique?**

Customize your order by adding your name and title to your shirt or jacket. Minimum charge of \$3.00 for up to 10 letters, \$.30 each additional letter. (price based on 3/4 in" high lettering)

### **Shipping and Handling**

#### **Shipping Cost**

\$4.00 For the first item

\$1.00 each additional item

\$2.00 additional when you order a coat

### **Return Policy and Other Important Information**

All merchandise is guaranteed to have quality embroidery. If the quality of the embroidery is not acceptable you may return the item to have it redone. Due to the products being personalized for WSPiR. All items that have been ordered can not be sent back to the supplier once they have been personalized with your logo. It is very important that you order your size correctly. American Monogram is not responsible if your garments do not fit. If you are unsure of your size please verify with measurements before ordering. Size charts are available for comparison through Michelle Hizey.

Due to supply and demand, some products that we offer may be on back order. If this should happen once you have placed your order, we will inform you of the status of your order and will do our best to either find you something comparable to replace the product that you had originally ordered, or refund your money.

**We at American Monogram strive to give you the quality and service you deserve as valued customers.**

If you have any questions, requests or concerns please contact

**Michelle Hizey at [mhizey@hotmail.com](mailto:mhizey@hotmail.com) (253)939-4619**

Or

**Ronald Hizey at [ron@americanmonogram.com](mailto:ron@americanmonogram.com) (208)746-9989**

<http://www.americanmonogram.com>

# Size Chart

<b>Mens/Unisex</b>	XS	S	M	L	XL
Regular/Tall Chest	30-32	34-36	38-40	42-44	46-48
Regular/Tall Neck Size	13½-14	14-14½	15-15½	16-16½	17-17½
Regular Sleeve	30½-31½	32-33	34-35	35-36	36½-37½
Tall Sleeve	-	-	-	36½-37½	38-39

<b>Mens Extended Sizes</b>	2XL	3XL	4XL	5XL	6XL
Regular/Tall Chest	50-52	54-55	57-58	60-61	63-64
Regular/Tall Neck Size	17½-18	18-18½	18½-19	19-19½	19½-20
Regular Sleeve	37½-38½	38½-39½	39½-40½	40½-41½	41½-42½
Tall Sleeve	39-40	40-41	41-42	-	-

<b>Ladies</b>	XS	S	M	L	XL
Size	4	6-8	10-12	14-16	18-20
Bust	32½-34	34½-35½	36½-38	39½-41	43-45

<b>Ladies Plus</b>	1XL	2XL
Size	18-20W	22-24W
Bust	47-51	52-56

Item# C852



**NEW Port Authority® Signature - Sandwich Bill Cap**

Fabric/Style: A great feeling fabric with an airy blend that offers the fine finishing detail of the contrast color sandwich. 70/30 cotton/nylon, 6-panel construction, unstructured low profile; CoolMax® Sweatband, sewn eyelets and fashion-curved bill.

Color: Available in Black

**WSPiR**

wspir.com

\$16.00

# Item# 2000/PC61



**Gildan® Ultra Cotton™ - 100% Cotton T-Shirt. OR  
Port & Company® Ultra Cotton™ - 100% Cotton T-Shirt**

Fabric/Style: 6.1-ounce, 100% cotton jersey; seamless double needle collar, taped neck and shoulders, double needle sleeve and bottom hem.

**Color: Available in Black and White**

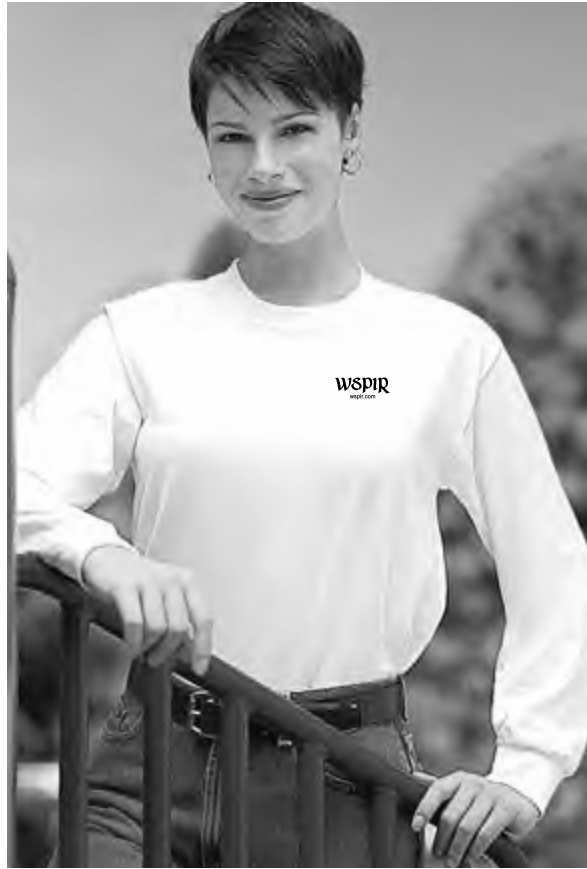
**Gildan Sizes: S-2XL (add \$1.00 for each size above XL)**

**Port Sizes: S-6XL (add \$1.00 for each size above XL)**

**WSPiR**  
wspir.com

**\$18.00**

Item# PC61LS



**Port & Company® - 100% Cotton Long Sleeve T-Shirt**

Fabric/Style: 6.1-ounce heavyweight 100% cotton jersey; 17 singles, taped shoulder to shoulder, coverseamed neck, double needle bottom hem.

Color: Available in Black and White

**Adult sizes: XS-4XL (add \$1.00 for each size above XL)**

**WSPiR**  
wspir.com

\$22.00

# Item# K500LS



## **NEW Port Authority® - Silk Touch Long Sleeve Sport Shirt**

Designer Notes: Lightweight pique is silky soft and supple for a comfortable fit; shrinkage is minimal.

Rooted in classic styling with a touch of panache at a wonderful price.

Fabric/Style: 5-ounce, 65/35 poly/cotton pique; flat knit collar and cuffs, double needle armholes and bottom hem, side vents: metal buttons with dyed-to-match plastic rims.

**Color: Available in Black and White**

**Adult sizes: S-6XL (add \$1.00 for each size above XL)**

**wspir**  
wspir.com

**\$22.00**

Item# S500T



**Port Authority® - Short Sleeve Twill Shirt.**

Fabric/Design: 5-ounce, 100% cotton twill, garment washed, double-needle stitched, button collar, patch pocket, double-needle hemmed at sleeves cuffs and is constructed without a back pleat.

Color: Available in Black or White

**Unisex sizes: XS-4XL (add \$1.00 for each size above XL)**

**WSPiR**  
wspir.com

\$26.00

Item# S600T



**Port Authority® - Long Sleeve Twill Shirt**

Fabric/Style: 5-ounce, 100% cotton twill; garment washed; double needle stitched, button-down collar, patch pocket, back pleat, button-through sleeve plackets and adjustable cuffs.

Color: Available in Black or White

**Unisex sizes: XS-6XL (add \$1.00 for each size above XL)**

**wspir**  
wspir.com

\$26.00

Item# K500



**Port Authority® - Silk Touch Sport Shirt**

Fabric/Style: 5-ounce, 65/35 poly/cotton pique, flat knit collar and cuffs, double-needle armholes and bottom hem, side vents; metal buttons with dyed-to-match rims

Color: Available in Black and White

**Unisex sizes: XS-6XL (add \$1.00 for each size above XL)**

**WSPiR**  
wspir.com

\$20.00

Item# K500P



**Port Authority® - Silk Touch Sport Shirt With Pocket**

Fabric/Style: 5-ounce, 65/35 poly/cotton pique, flat knit collar and cuffs, double-needle and bottom hem, side vents; metal buttons with dyed-to-match rims

Color: Available in Black and White

**Unisex sizes: XS-6XL (add \$1.00 for each size above XL)**

**WSPiR**  
wspir.com

\$20.00

Item# 055X



**Stedman® by Hanes® - 7-Ounce Pique Knit Sport Shirt**

Fabric/Style: 7-ounce, 100% cotton pique, welt collar and cuffs, double-needle bottom hem. Two-button placket with wood tone buttons.

Color: Available in Black and White

**Unisex sizes: XS-4XL (add \$1.00 for each size above XL)**

**WSPiR**  
wspir.com

\$18.00

Item# 2400



**Outer Banks® - Ladies Pique Knit Sport Shirt**

Fabric/Style: 6.5-ounce, 100% combed cotton pique. Tailored for a feminine fit. Four-button placket with pearlized buttons; welt collar and cuffs, double-needle round-hemmed bottom.

Color: Available in Black and White

Ladies sizes: XS-4XL (add \$2.00 for each size above XL)

**WSPiR**  
wspir.com

\$21.00

Item# M100W



**Ladies' Harriton Short Sleeve Pique Polo**

100% cotton pique sport shirt. Three-button placket with pearlized Harriton logo buttons. Ribbed cuffs. Double-needle stitching. Signature placket.

**Color: Available in Black and White**

**Ladies sizes: S-2XL (add \$3.00 for 2XL)**

**wspir**  
wspir.com

\$23.00

Item# D100W



**Devon & Jones Ladies Short Sleeve Pima Pique Polo**

100% Peruvian pima cotton; feminine Y-collar; 2-button placket; Dura-pearl buttons; rib-knit cuffs; side vents

**Color: Available in Black and White**

**Ladies sizes: XS-2XL (add \$3.00 for 2XL)**

**wspir**  
wspir.com

**\$25.00**

Item# DP145W



**Devon & Jones Pink Pima Sleeveless Shell**

100% pima cotton interlock fabric, self-fabric neck tape; front darts; side vents; signature pink locker loop; stretch tape in shoulders for added strength.

**Color: Available in Black and White**

**Ladies sizes: XS-3XL (add \$3.00 for each size above XL)**

**wspir**  
wspir.com

**\$20.00**

Item# D500W



**D500W Devon & Jones Ladies Long Sleeve Titan Twill Shirt**

Combed cotton, horn buttons; straight pointed collar; adjustable cuffs; double back pleat

**Color: Available in Black and White**

**Ladies sizes: S-2XL (2XL 26.00)**

**wspir**  
wspir.com

**\$25.00**

Item# L340C



**Port Authority® - Ladies Long Sleeve Scoop Neck T-Shirt**

Fabric/Style: 7-ounce, 95/5 cotton/spandex, 1 x 1 rib construction.

Color: Available in Black or White

Ladies sizes: XS-2XL (add \$2.00 for each size above L)

**wspir**  
wspir.com

\$22.00

Item# D150W



**Devon & Jones Ladies Tanguis Pique Polo**

100% Peruvian tanguis cotton; breathable 30s singles box-knit stitch fabric; trim fit and feminine natural lined snap placket.

**Color: Available in Black or White**

**Ladies sizes: XS-2XL (add \$3.00 for 2XL)**

**wspir**  
wspir.com

\$25.00

Item# L341V



**Port Authority® - Ladies 3/4 Sleeve V-Neck T-Shirt**

Fabric/Style: 7-ounce, 95/5 cotton/spandex, 1 x 1 rib construction.

Color: Available in Black or White

Ladies sizes: XS-2XL (add \$2.00 for each size above L)

**WSPiR**  
wspir.com

\$21.00

Item# L440C



**Port Authority® - Ladies Scoop Neck T-Shirt**

Fabric/Style: 7-ounce, 95/5 cotton/spandex, 1 x 1 rib construction.

Color: Available in Black or White

**Ladies sizes: XS-2XL (add \$2.00 for each size above L)**

**wspir**  
wspir.com

\$20.00

Item# 996M



**JERZEES® - Pullover Hooded Sweatshirt**

Fabric/Style: 8-ounce, 50/50 cotton/poly NuBlend™ fleece; double-lined hood with grommets, matching drawstring, coverseamed waistband, ribbed cuffs, set-in sleeves, muff pocket.

**Color: Available in Black or White**

**Adult sizes: S-3XL (add \$1.00 for each size above XL)**

**wspir**  
wspir.com

\$25.00

Item# PC90



**Port & Company® - Crewneck Sweatshirt**

Fabric/Style: 9-ounce, 50/50 cotton/poly fleece; coverseamed neck, armholes, and waistband; spandex in collar, cuffs and waistband; set-in sleeves.

Color: Available in Black or White

Adult sizes: S-4XL (add \$1.00 for each size above XL)

**wspir**  
wspir.com

\$21.00

# Item# 993M



## **JERZEES® - Full Zip Hooded Sweatshirt**

Designer Notes: Good price point makes this a big seller in a lighter weight fleece that has great loft. Fabric/Style: 8-ounce, 50/50 cotton/poly NuBlend™ fleece; single-ply hood with grommet, coverseamed waistband, muff pocket, set-in sleeves.

**Color: Available in Black and White**

**Adult sizes: S-3XL (add \$1.00 for each size above XL)**

**wspir**  
wspir.com

**\$30.00**

Item# JP19



**Port & Company® - Value Fleece Vest**

Fabric/Style: 13.5-ounce, 100% spun polyester, Lycra around the armholes and waistband; front pockets and zipper pull.

Color: Available in Black only

**Unisex sizes: XS-6XL (add \$1.00 for each size above XL)**

**wspir**  
wspir.com

\$25.00

Item# A515



**Port Authority® - Waist Apron with Pockets**

Fabric/Style: 100% cotton with Teflon finish for added protection; 3 pouch pockets and extra long 1/2" waist ties. A versatile apron choice when you're simply looking for extra pocket space. Measures 23"w x 11"l.

Color: Black and White

**One size fits most**

**wspir**  
wspir.com

\$12.00

# Item# BG95



## **NEW Port and Company® - Basic Backpack**

Fabric Style: Durable 900 denier polyester fabric, padded back for comfort; large main compartment and large secondary compartment has 2-way zippers, front zippered pockets offer easy embroidery access.

Dimensions: 12.5"w x 17"h x 7.75"d

**wspir**  
wspir.com

\$20.00

Item# BG97



**NEW Port & Company® - Gym Bag**

Fabric/Style: Durable 600 denier polyester fabric; small front side pocket, right side zippered pocket and side wet pouch. Dimensions: 20.75"w x 10.75"h

**wspir**  
wspir.com

**\$21.00**

# Item# B500



## Port Authority® - All Purpose Tote

Fabric/Style: Durable 600 denier polyester; zippered top opening, front pockets, zippered inside pocket, key chain and black web handles. A go-anywhere tote that is great for around town, shopping and the beach thanks to its generous size and durable construction. Measures 15.5"w x 15.75"h x 7.25"d.

**WSPiR**  
wspir.com

**\$17.00**